

Shrink Disc MAV 2108 light duty SPLIT, HC, HT

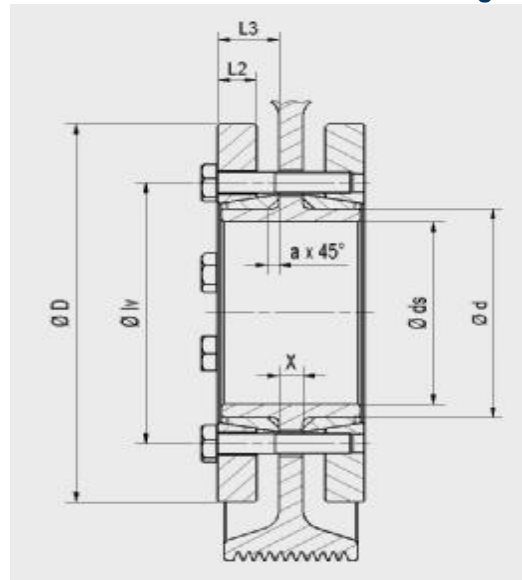
rev. 0

Features:

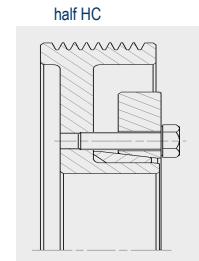
- shaft to hollow shaft connection
- not self-locking
- screws DIN 931/933 grade 10.9
- shaft / hub surface finish Ra < 3,2 μm
- hollow shaft outer diameter tolerance: h8
- hub bore / shaft fitting tolerance:

shaft size ds	ISO tolerances	max clearance
from	to	mm
6	10	0,011
11	18	0,014
19	30	0,017
31	50	0,032
51	80	0,048
81	120	0,069
121	180	0,079
181	250	0,090
251	315	0,101
316	400	0,111
401	500	0,123

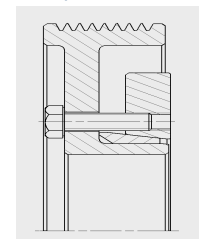
web clearance holes (mm)									
screw size	M5	M6	M8	M10	M12	M16	M20	M24	M27
SPLIT	7	8	10	13	15	19	23	27	30
half HT	5,5	7	9	11	13,5	18	22	26	30



SPLIT



half HC



half HT

Ma: screw tightening torque
 Mt: max. transmissible torque (Fax=0 kN)
 Fax: max. transmissible axial load (Mt=0Nm)
 Ps: contact pressure on shaft
 Ph: contact pressure on hub OD

Example of order:

MAV2108 – 220 x 345 SPLIT / HC / HT, along with web thickness X

Type HC and HT: PERFORMANCES Mt and Fax REDUCED of 50%

Dimensions						Screws		Performance				Weight	
ds	d x D	L2	L3	lv	a x 45°	n.	size	Ma	Mt	Fax	Ps	Ph	kg
mm	mm	mm	mm	mm	mm			Nm	Nm	kN	N/mm ²	N/mm ²	
95									11.000	230	130	184	
100	125 x 190	22,0	31,0	158	4,0	8	M 10	59	13.200	260	140	184	5,6
105									15.600	300	150	184	
110									18.600	340	163	206	
120	140 x 220	22,0	31,0	175	4,0	10	M 10	59	24.200	400	179	206	7,9
125									27.000	430	183	206	
130									30.500	470	192	223	
135	155 x 245	22,0	31,0	192	4,0	12	M 10	59	34.100	500	198	223	9,9
140									37.800	540	205	223	
135									36.800	550	186	220	
140	165 x 260	26,0	36,0	210	5,5	10	M 12	100	40.900	580	193	220	13
145									45.200	620	198	220	
145									40.500	560	178	207	
150	175 x 275	26,0	36,0	220	5,5	10	M 12	100	44.700	600	183	207	15
155									49.000	630	188	207	
155									54.400	700	209	235	
160	185 x 295	26,0	36,0	225	5,5	12	M 12	100	59.300	740	214	235	17
165									64.500	780	218	235	
165									73.900	900	206	229	
170	195 x 315	31,0	41,0	237	5,5	15	M 12	100	80.100	940	210	229	24
175									86.500	990	214	229	
180									98.600	1.100	196	221	
190	220 x 345	36,0	47,0	265	5,5	10	M 16	250	113.000	1.200	200	221	32
200									129.000	1.300	208	221	
200									137.000	1.400	220	243	
210	240 x 370	36,0	49,5	290	8,0	12	M 16	250	155.000	1.500	226	243	36
215									165.000	1.500	229	243	
220									152.000	1.400	180	200	
230	260 x 395	40,0	53,5	310	8,0	12	M 16	250	171.000	1.500	186	200	44
235									181.000	1.500	188	200	
230									206.000	1.800	197	218	
240	280 x 425	46,0	59,5	333	8,0	16	M 16	250	229.000	1.900	201	218	58
250									255.000	2.000	206	218	
250									260.000	2.100	210	229	
260	300 x 460	46,0	59,5	358	8,0	18	M 16	250	285.000	2.200	213	229	69
270									313.000	2.300	217	229	

Shrink Disc MAV 2108 light duty SPLIT, HC, HT

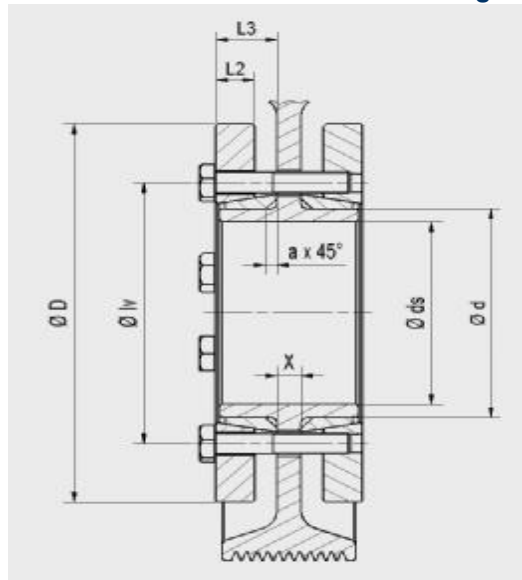
rev. 0

Features:

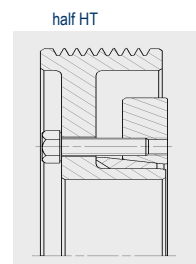
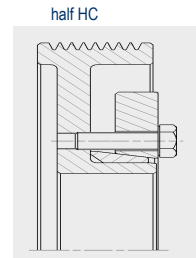
- shaft to hollow shaft connection
- not self-locking
- screws DIN 931/933 grade 10.9
- shaft / hub surface finish Ra < 3,2 μm
- hollow shaft outer diameter tolerance: h8
- hub bore / shaft fitting tolerance:

shaft size ds	ISO tolerances	max clearance
from	to	mm
6	10	0,011
11	18	0,014
19	30	0,017
31	50	0,032
51	80	0,048
81	120	0,069
121	180	0,079
181	250	0,090
251	315	0,101
316	400	0,111
401	500	0,123

web clearance holes (mm)									
screw size	M5	M6	M8	M10	M12	M16	M20	M24	M27
SPLIT	7	8	10	13	15	19	23	27	30
half HT	5,5	7	9	11	13,5	18	22	26	30



SPLIT



Ma: screw tightening torque
 Mt: max. transmissible torque (Fax=0 kN)
 Fax: max. transmissible axial load (Mt=0Nm)
 Ps: contact pressure on shaft
 Ph: contact pressure on hub OD

Example of order:

MAV2108 – 220 x 345 SPLIT / HC / HT, along with web thickness X

Type HC and HT: PERFORMANCES Mt and Fax REDUCED of 50%

Dimensions						Screws		Performance				Weight	
ds	d x D	L2	L3	lv	a x 45°	n.	size	Ma	Mt	Fax	Ps	Ph	kg
mm	mm	mm	mm	mm	mm			Nm	Nm	kN	N/mm ²	N/mm ²	
270	320 x 495	48,0	60,5	378	8,0	18	M 16	250	284.000	2.100	197	215	85
280									311.000	2.200	201	215	
290									340.000	2.300	204	215	
290	340 x 535	48,0	60,5	402	8,0	20	M 16	250	347.000	2.400	209	225	101
300									378.000	2.500	212	225	
310									410.000	2.600	215	225	
310	360 x 555	54,0	71,0	423	9,0	16	M 20	490	473.000	3.100	209	223	120
320									509.000	3.200	211	223	
330									549.000	3.300	214	223	
330	380 x 585	60,0	78,0	442	9,0	18	M 20	490	570.000	3.500	198	212	148
340									614.000	3.600	201	212	
350									660.000	3.800	204	212	
350	390 x 595	60,0	78,0	452	9,0	20	M 20	490	710.000	4.100	220	230	151
360									760.000	4.200	222	230	
370									812.000	4.400	225	230	
370	420 x 630	64,0	82,0	485	9,0	20	M 20	490	728.000	3.900	188	199	175
380									777.000	4.100	190	199	
390									828.000	4.200	193	199	
380	460 x 685	71,0	91,5	527	11,0	24	M 20	490	822.000	4.300	183	198	226
390									875.000	4.500	185	198	
410									982.000	4.800	188	198	
420	500 x 750	80,0	101,5	572	11,0	30	M 20	490	1.160.000	5.500	183	198	310
430									1.230.000	5.700	185	198	
440									1.300.000	5.900	187	198	

Information subject to change without prior notification. © MAV S.p.A.